

Industrial Spyder™ and Factories of the Future

Integral production monitoring system

THE COLLECTION, ANALYSIS, AND PROCESSING OF INDUSTRIAL DATA USING ADVANCED SENSORS, BLOCKCHAIN TECHNOLOGY AND ANALYTICS

CONNECTING THE MAIN PRODUCTION LINE FACTORS: MEN - MACHINES – TOOLS

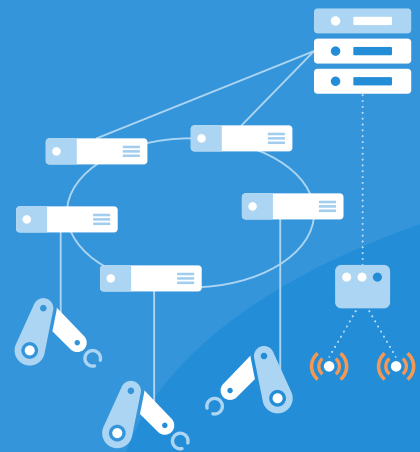
INDUSTRY 4.0 TECHNOLOGIES – INTERNET OF THINGS (IOT)

UNIFORM PLATFORM FOR ALL USERS IN THE INDUSTRIAL ENVIRONMENT

Three steps to obtaining the Industrial Spyder solution:

Step 1:

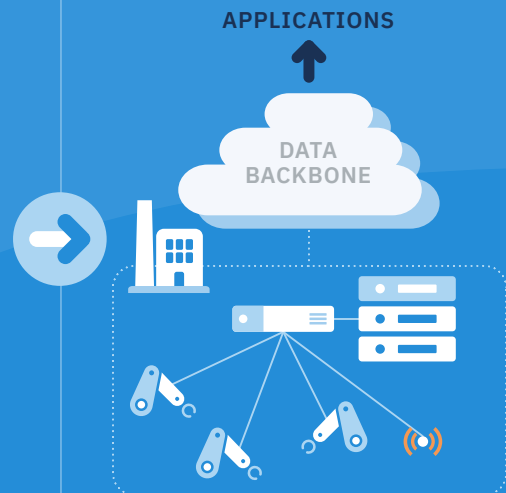
Connecting devices and collecting data



- "Blackbox" data acquisition
- External sensors for obtaining signals from machines and movements of people and tools

Step 2:

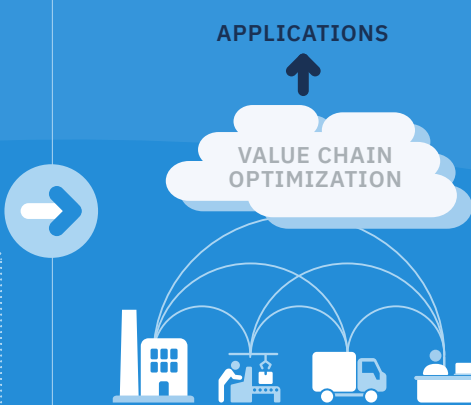
Storing data in the data backbone



- Translating collected data to the data backbone
- Integration with back-end systems

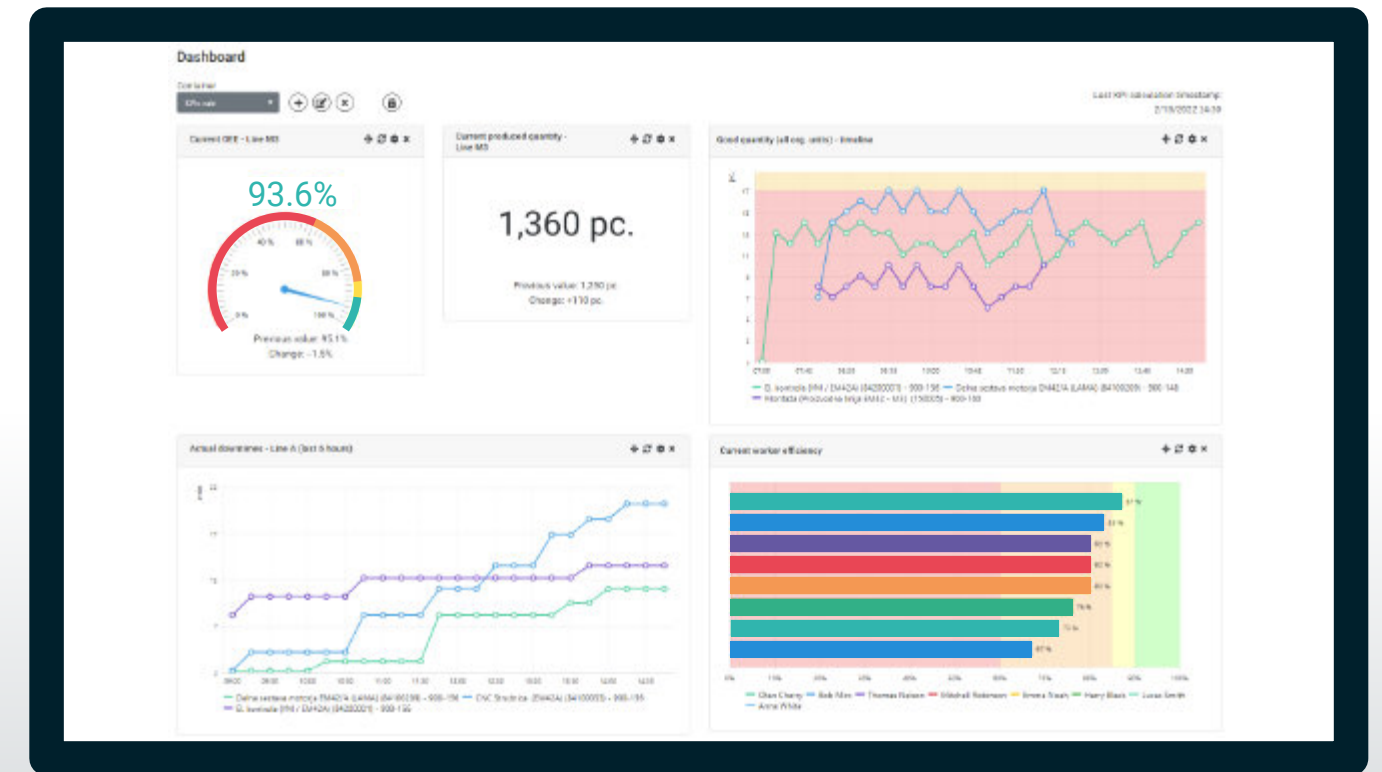
Step 3:

Analytics and value chain optimization



- Vertical and horizontal integration
- Calculation and display of KPIs in real time

Industrial Spyder user dashboard – basic display



About NIL

NIL is a globally recognized provider of advanced data center, network, cloud, cybersecurity solutions as well as services for business and industry environments, state institutions, and public organizations. With its efficient solutions, NIL helps organizations become more successful in the digitalized world.

The headquarters are in Ljubljana, Slovenia. NIL employs more than 180 experts and is part of the Danish Conscia Group.

consulting@nil.com

About Analitica

Analitica is a software development and consulting company that combines expert knowledge from the fields of natural sciences and engineering with in-depth knowledge of information technology. At Analitica, we believe that in complex environments, IT projects demand in-depth expertise of the fields covered by each project.

info@analitica-labs.com

